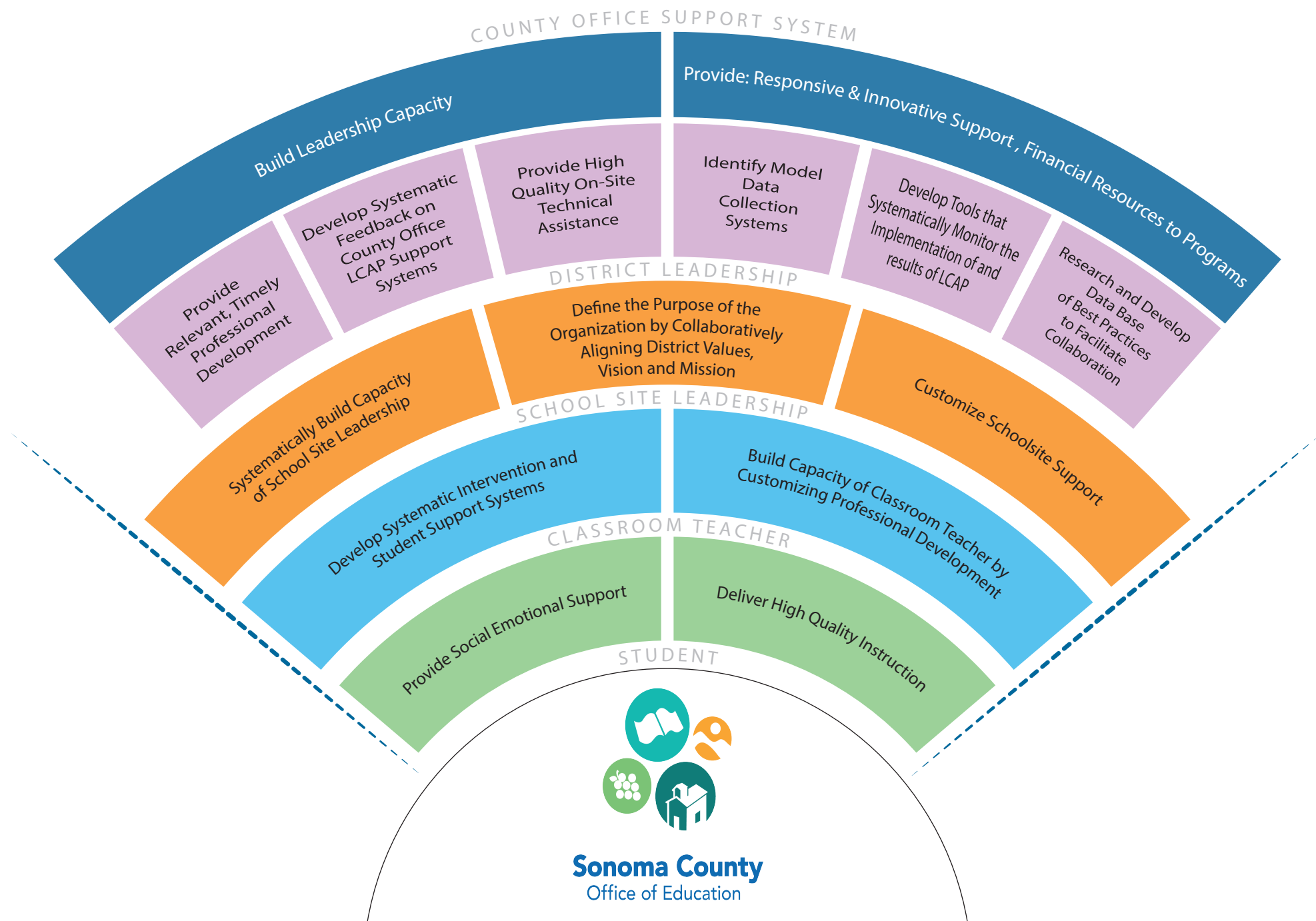


Framework for Continuous Systems Improvement in Sonoma County



SONOMA COUNTY OFFICE OF EDUCATION
Framework for Continuous Systems Improvements in Sonoma County

COUNTY OFFICE SUPPORT SYSTEM

- Build Leadership Capacity
- Provide: Responsive and Innovative Support, Financial Resources to Programs
 - Provide relevant, timely professional development
 - Develop systematic feedback on County Office LCAP support systems
 - Provide high quality on-site technical assistance
 - Identify model data collection systems
 - Develop tools that systematically monitor the implementation of and results of LCAP
 - Research and develop database of best practices to facilitate collaboration

DISTRICT LEADERSHIP

- Systematically build capacity of school site leadership
- Define the purpose of the organization by collaboratively aligning District values, vision and mission
- Customize school site support

SCHOOL SITE LEADERSHIP

- Develop systematic intervention and student support systems
- Build capacity of classroom teacher by customizing professional development

CLASSROOM TEACHER

- Provide social emotional support
- Deliver high quality instruction

STUDENT