

# Managing confirmed or suspected COVID-19 in youth settings\*

## What to do if a person has:

**COVID-19 symptoms**

**Confirmed COVID-19 (positive test)**

**Close contact with a COVID-19 case**

Has the person had close contact with a person who has COVID-19?

••YES••



**Send home.** Isolate and get tested (if not tested already) even if fully vaccinated or previously infected.

See Page 2

NO

Do they have documentation from a healthcare provider (HCP) for an underlying chronic health condition that matches their symptoms **OR** a negative SARS-CoV-2 test **OR** an HCP confirmed alternate diagnosis?

YES

**Non-COVID-19 illness.** Follow guidelines below for alternate diagnoses.

NO

**Send home.** Isolate and get tested (if not tested already) even if fully vaccinated or previously infected.

**Positive or no test:** Stay home in isolation and exclude from in-person instruction for at least 10 days from symptom onset (or from test date if no symptoms). Isolation can end after 10 days **IF** fever-free (without using fever-reducing medication) for at least the previous 24 hours **AND** other symptoms improving.

**Negative test or alternate diagnosis** (with no previous positive test): May return to in-person instruction if fever-free (without using fever-reducing medication) for at least the previous 24 hours **AND** other symptoms improving.

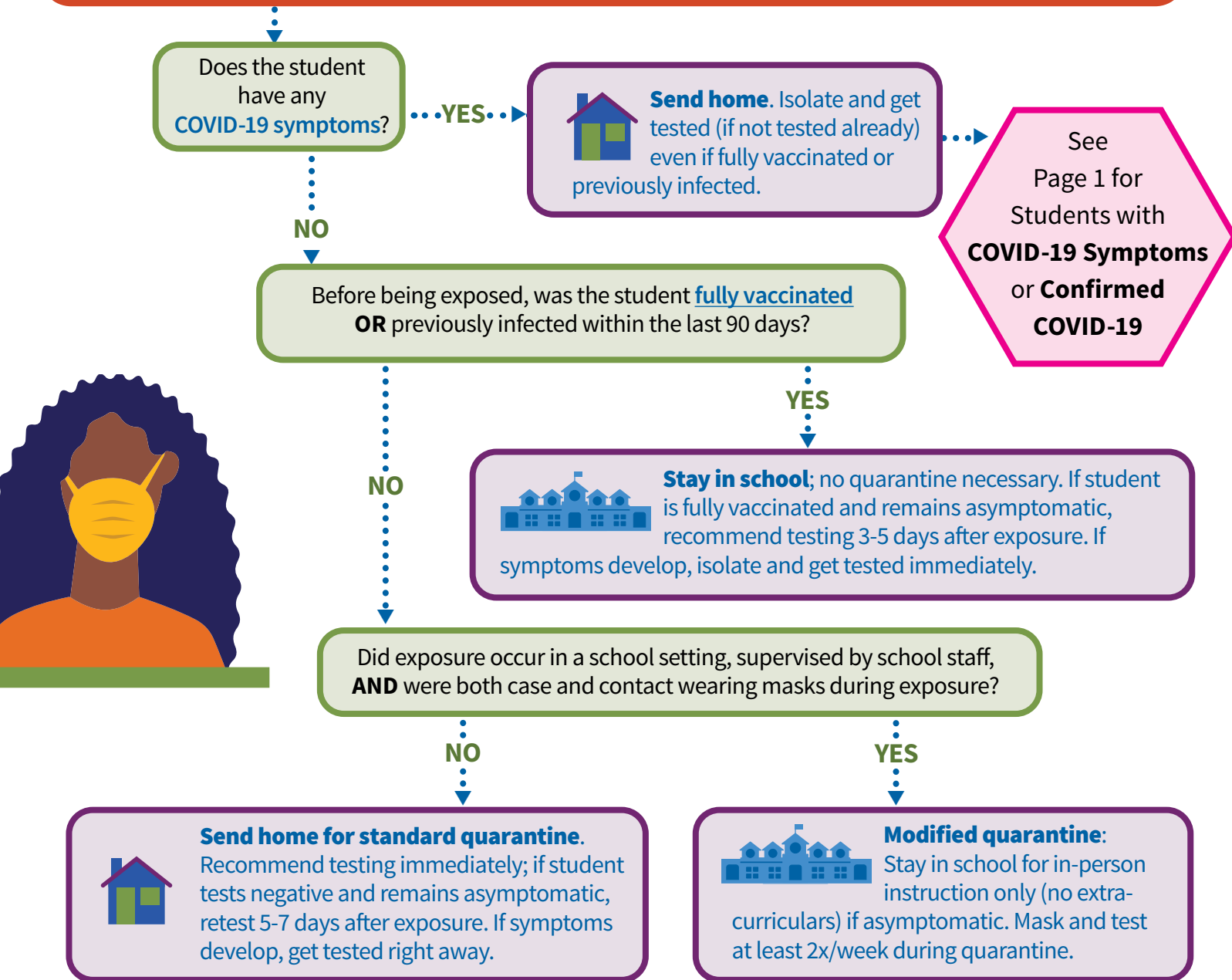
\*For more detailed information and guidelines, see [CDPH Schools Guidance](#) and [CDPH Isolation & Quarantine Guidance](#).

Staff and employers are subject to Cal/OSHA [COVID-19 ETS](#) or [Aerosol Transmissible Diseases](#) standard and should review those requirements.



# Managing COVID-19 exposure (close contacts)

## What to do if a student is a close contact to someone with COVID-19



**Positive test:** Stay home in isolation and exclude from in-person instruction for at least 10 days from symptom onset (or from test date if no symptoms). Isolation can end after 10 days **IF** fever-free (without using fever-reducing medication) for at least the previous 24 hours **AND** other symptoms improving.

**Negative or no test:** Standard or modified quarantine can end after day 10 following last exposure if student remains asymptomatic.\* Quarantine can end after day 7 following last exposure if the student remains asymptomatic and tests negative on day 5 or later.\*

\*Continue monitoring for symptoms and following all [recommended preventative measures](#) through day 14 (masking, hand washing, avoiding crowds, etc). Isolate and get tested if symptoms develop.

Staff and employers are subject to Cal/OSHA [COVID-19 ETS](#) or [Aerosol Transmissible Diseases](#) standard and should review those requirements.